

# Speed control valve

Supply air regulating

**Push to lock**

## TECHNICAL FEATURES

**Temperature:**

-20°C to 70°C

**Working pressure:**

0 to 10 bar

**Materials:**

Body: POM

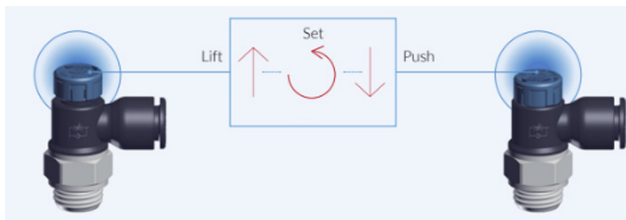
Seals: NBR



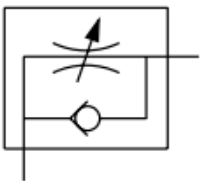
-20° C ÷ +70°C



0 ÷ 10 bar



### Supply-air regulating



*\* See the next page for the dimensions/ specifications*

## SPECIFICATIONS

ARTICLE NUMBER	TUBE DIAMETER (D)	THREAD (D1)	D2	D3	L1	L2	L3	L4	CH
CFCM504SAR	4	M5X0.8	9.5	11	4	15.5	26.2 27.2	17.2	10
CFC1804SAR	4	G 1/8"	9.5	15.5	5.5	19.5	32.5 34	18.5	14
CFCM506SAR	6	M5X0.8	11.5	11	4	15.9	26.6 27.6	20.3	10
CFC1806SAR	6	G 1/8"	11.5	15.5	5.5	19.4	32.6 34.1	21.5	14
CFC1406SAR	6	G 1/4"	11.5	18	6.5	22.9	36 37.5	22.5	16
CFC1808SAR	8	G 1/8"	14	15.5	5.5	19.4	34.6 36.1	22	14
CFC1408SAR	8	G 1/4"	14	18	6.5	22.9	36 37.5	23	16
CFC3808SAR	8	G 3/8"	14	22.5	7	27	45.6 47.1	24.5	20
CFC1410SAR	10	G 1/4"	16	18	6.5	22.9	36.1 37.6	25	16
CFC3810SAR	10	G 3/8"	16	22.5	7	27	45.6 47.1	26.3	20
CFC1210SAR	10	G 1/2"	16	18	8.5	32.5	51.1 52.6	27	25
CFC3812SAR	12	G 3/8"	19	22.5	7	27	45.6 47.1	28	20
CFC1212SAR	12	G 1/2"	19	28	8.5	32.5	51.1 52.6	28.6	25

