

T-coupling

Push-in

Temperature range: -20°C to
max. +70°C

Operating pressure: up to max.
18 bar

Vacuum:
-99

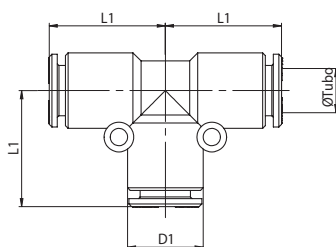
PE

T- koppeling

Union tee

T égal

T-Verschraubung



Type	Ø Tub	D1	L1	g _Δ
PE04TL	4	10	15,2	3,3
PE06TL	6	12	19,7	5,4
PE08TL	8	14	21,5	7,1
PE10TL	10	16	23,5	8,8
PE12L	12	19	27	13,8
PE14TL	14	22,5	30,5	21,7