

high flow rate  
compact design  
low weight  
pressure balanced  
bidirectional flow  
maintenance-free  
high durability

FMX® valves are characterized by high flow rate with compact design and low weight. The externally controlled 2/2-way valve can be controlled via a 3/2-way pilot valve as well as a valve cluster. The pneumatic cylinder has three "T" grooves that can be used to add on accessories such as mounting brackets and limit switches. The FMX® valve series offers a manifold option as well; The inlet A-port on the 2/2-way valve is designed to be quickly and easily installed into the manifold strip.

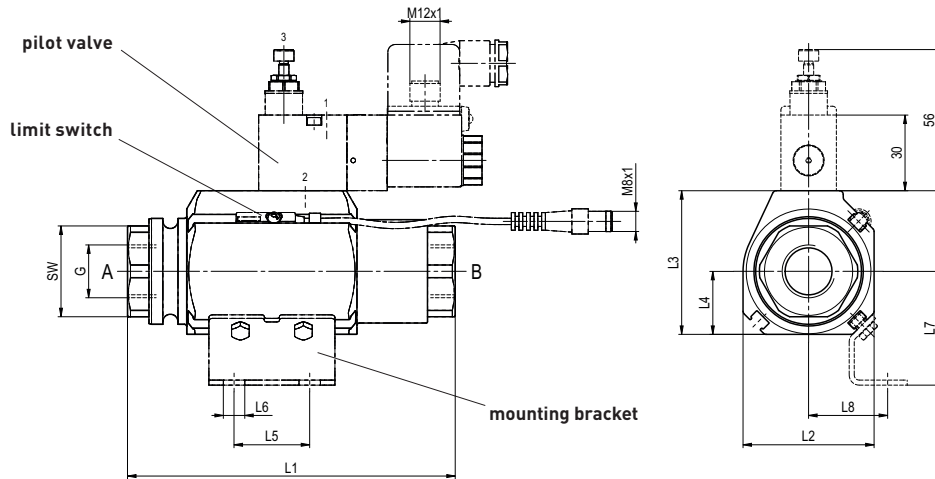


technical data	externally controlled							
	FMX238NO FMX238NC	FMX212NO FMX212NC	FMX312NO FMX312NC	FMX334NO FMX334NC	FMX434NO FMX434NC	FMX410NO FMX410NC	FMX510NO FMX510NC	FMX5114NO FMX5114NC
2/2-way valve								
type	FMX2		FMX-3		FMX-4		FMX-5	
orifice mm	10		15		20		25	
port connection threads	G 3/8   G 1/2		G 1/2   G 3/4		G 3/4   G 1		G 1   G 1 1/4	
Kv value m³/h	3,7   4,3		8,5   10,5		15,4   17,0		23,7   24,6	
weight kg	0,6		1		1,5		2,2	
flow direction	A ⇌ B   B ⇌ A							
pressure range	0-16 bar   0-16 bar							
function	NC - normally closed				NO - normally open			
design	pressure balanced, with spring return							
body materials	1.4301 stainless steel (valve manifold aluminium)							
seal materials	FKM / PTFE							
vacuum leak rate	$< 10^{-4}$ mbar•l•s <sup>-1</sup>							
media	gaseous - liquid							
media temperature	-20 to +120 °C (valve manifold -10 to +120 °C, consider seal materials)							
ambient temperature	-20 to +80 °C (valve manifold -10 to +80 °C)							
switching cycles 1/min	660		550		410		380	
switching time opening ms	30		30		35		35	
switching time closing ms	35		40		60		70	
control	pneumatic actuation, 3/2-way pilot valve optional							
actuator connection	G 1/8							
actuation pressure	NC 3-8 bar   NO 4-8 bar							
air consumption cm³/stroke	2		4		8		11	

accessories	
pilot valve	3/2-way pilot valve flow rate 280 l/min pressure range 2-10 bar G 1/8 temperature range -10 to +50 °C 
coil / illuminated plug	Form B 24V DC - 4,8W   110V AC - 8,4W   230V AC - 7,9W M12x1 Desina 24V DC - 4,8W M12x1 VDMA 24V DC - 4,8W protection IP65 energized duty rating 100%
mounting	mounting bracket
limit switches	magnetic, lead cable 5 / 10 meters optional

## dimensions

type	FMX-2	FMX-3	FMX-4	FMX-5
thread G	3/8   1/2	1/2   3/4	3/4   1	1   1 1/4
SW mm	27	36	41	50
L1 mm	110	130	150	160
L2 mm	42,5	52	60	66
L3 mm	48	57	64	71
L4 mm	20	25	28	33
L5 mm	25	30	30	30
L6 mm	6,5	8,5	8,5	8,5
L7 mm	33	45	47	51
L8 mm	24	31,5	33,5	37



## valve manifold

type	FMX-2	FMX-3	FMX-4	FMX-5
slots	2   3   4   5	2   3   4   5	2   3   4   5	2   3   4   5
thread G	1	1 1/4	1 1/2	2
L9 mm	123   170   217   264	139   195   251   307	150   215   280   345	170   245   320   395
L10 mm	38	41,5	42,5	47,5
L11 mm	47	56	65	75
L12 mm	152	187	213	236
L13 mm	53	59,5	71	75,5
L14 mm	50	55	70	75
L15 mm	30	30	33	38
L16 mm	21	28	33	38
L17 mm	8	8	10	11
Ød	6,6 (M6)	6,6 (M6)	9 (M8)	11 (M10)

