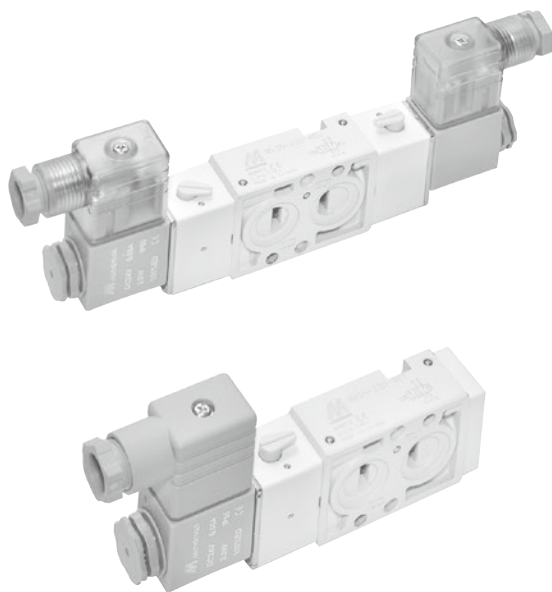


NAMUR series

NAMUR SOLENOID VALVE

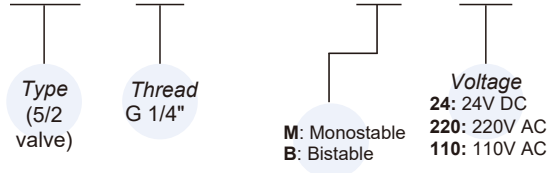


Specification

Model	52V14NMM..	52V14NMB.
Bore No.	14	
Port size	G1/4	
No. of port	5	
No. of position	2	
Medium	Air	
Operating pressure range	0.2~0.8 MPa	
Proof pressure	1 MPa	
Effective orifice	18 mm ²	
Response time	38 ms	
Ambient temperature	-5~+50°C (No freezing)	
Voltage	AC110V, 220V (50/60)Hz, AC/DC24V	
Power consumption	AC=4.8/4.4VA, 6/4.9VA, DC=2W	
Available voltage range	±10%	
Insulation class	F class	
Weight (Explosion-proof)	233 g (441 g)	343 g (761 g)

Order example of valve

52V — 14 — NM — M — 24



52V14NMM24
52V14NMB220

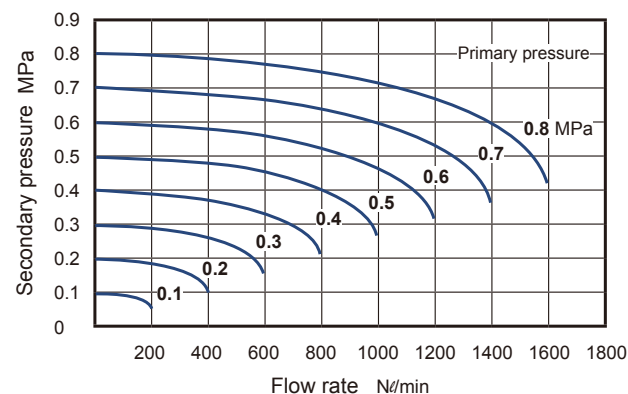
Order example

Table 1

Property for explosion-proof type

Anti-explosion class	EEx m II T4
Voltage	AC110V, 220V, (50/60)Hz, DC24V.
Power consumption	AC=4.4VA DC=5W
Available voltage range	±10%
Insulation class	F class
Wire length	3 m

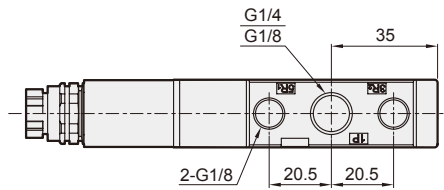
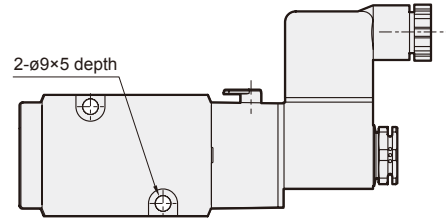
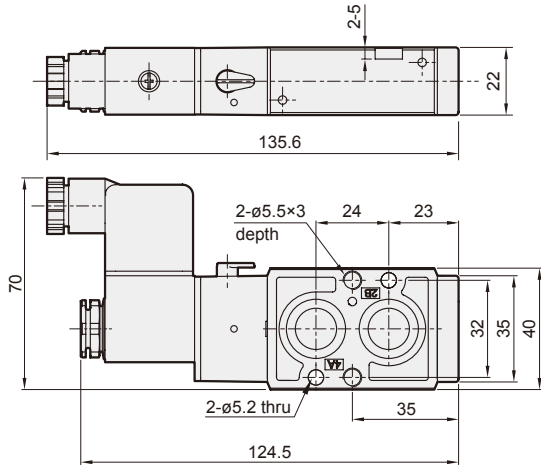
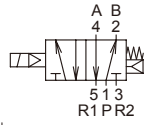
Flow features



NAMUR VALVES Dimensions

SOLENOID VALVE

52V14NMM...



52V14NMB...

