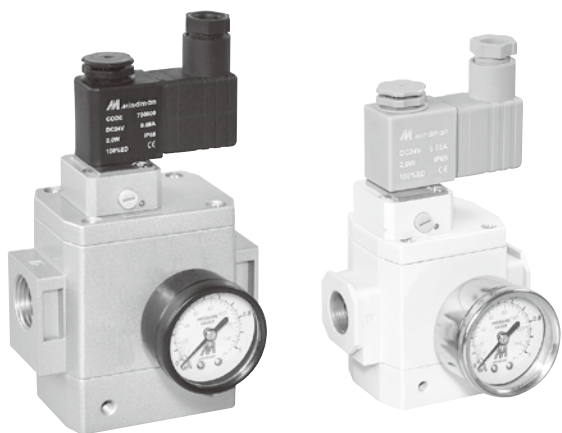


SOFT START-UP VALVE



- Start-up valve for low speed air supply to gradually raise initial pressure in an air system and for quick exhaust by cutting off air supply.
- Combination with modular type air units (F.R.L. unit).
- Adaptor possess smooth pressure relief is optional.

Specification

Model	MAVS200	MAVS300	MAVS400
Bore No.	8A	10A	15A
Port size	1/4	3/8	1/2
Medium	Air		
Operating pressure range (*)	0.25~1 MPa		
Effective orifice	1(P)→2(A)	20 mm ²	37 mm ²
	2(A)→3(R)	24 mm ²	49 mm ²
Ambient temperature	0~+60°C		
Voltage	AC110V, 220V (50/60)Hz, DC24V		
Power consumption	AC=4.8/4.4VA, 6/4.9VA DC=2W		
Available voltage range	±10%		
Insulation class	F class		
Option	Pressure gauge (PG-40), L type bracket		
Weight	450 g	520 g	800 g

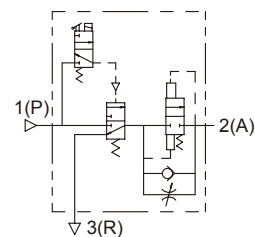
Order example

SSV – 14 – 24VDC

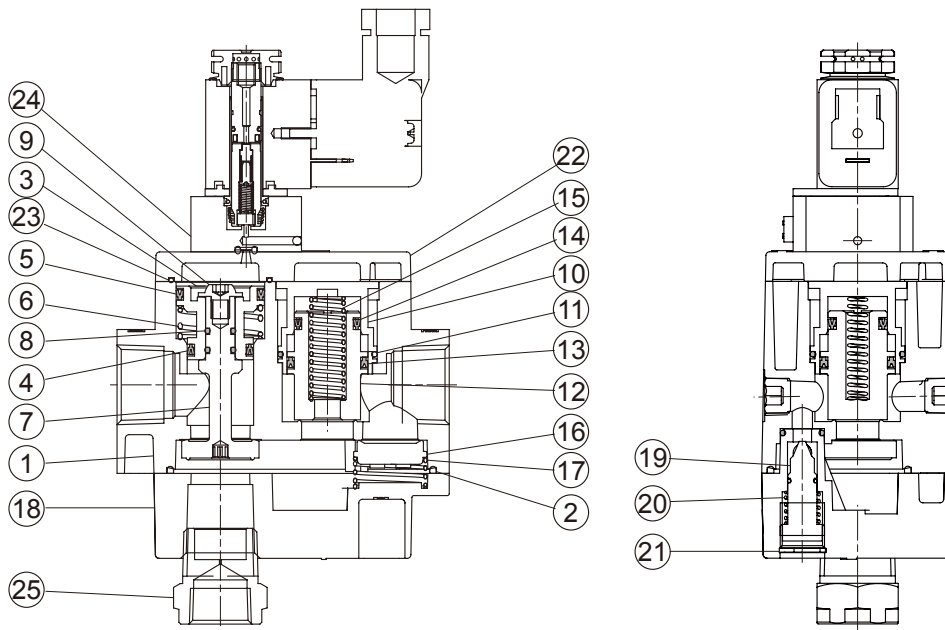
MODEL	PORT SIZE	VOLTAGE
14:	1/4	24VDC
38:	3/8	220VAC
12:	1/2	110VAC

example:
SSV1424VDC
SSV12220VAC

Symbol



SOFT START-UP VALVE

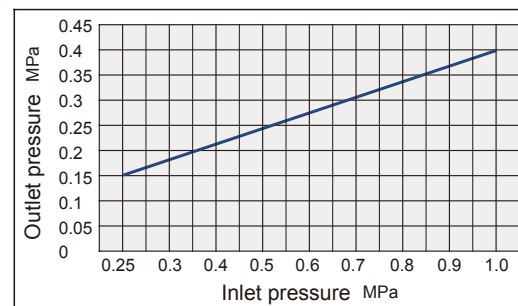


Material

No.	Part name	Material
1	Body	Aluminum alloy
2	Body packing	NBR
3	Piston A	Aluminum alloy
4	Seal ring	NBR
5	Rod packing	NBR
6	Piston A spring	SWP
7	Main valve assembly	Copper+NBR
8	O-ring	NBR
9	Screw	Alloy steel
10	Snap ring	Spring steel
11	O-ring	NBR
12	Piston B	Copper+NBR
13	Seal ring	NBR
14	Seal ring	NBR
15	Piston B spring	Stainless steel
16	Check valve	Copper+NBR
17	Check valve spring	Stainless steel
18	Cap	Aluminum alloy
19	Needle valve	Copper
20	Needle valve spring	SWP
21	Snap ring	Spring steel
22	Cover	Aluminum alloy
23	Cover ring	NBR
24	Pilot valve assembly	-
25	Adaptor with smooth pressure relief	Aluminum alloy

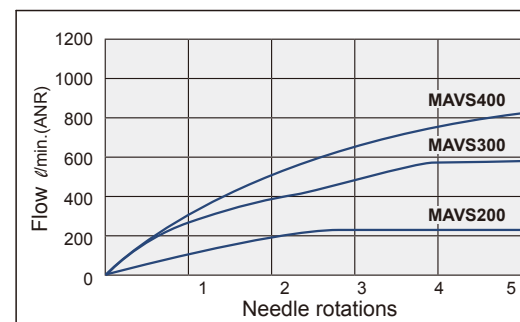
Flow feature

Piston B switching pressure (Close→Open)

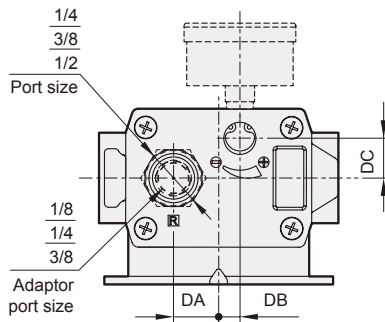
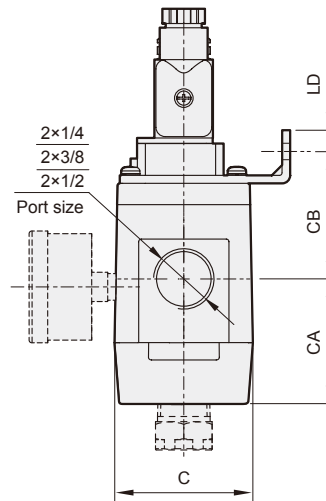
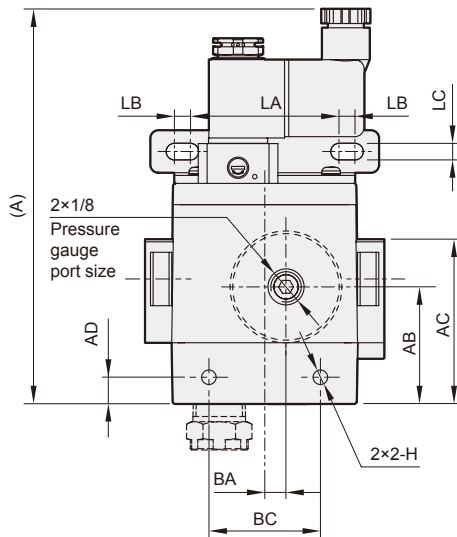
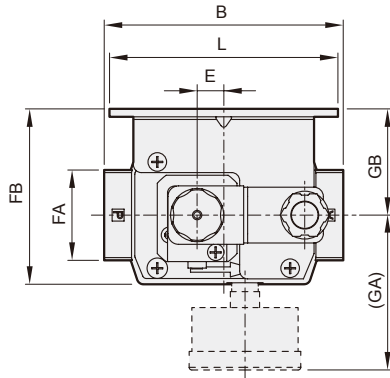


Needle valve low characteristics

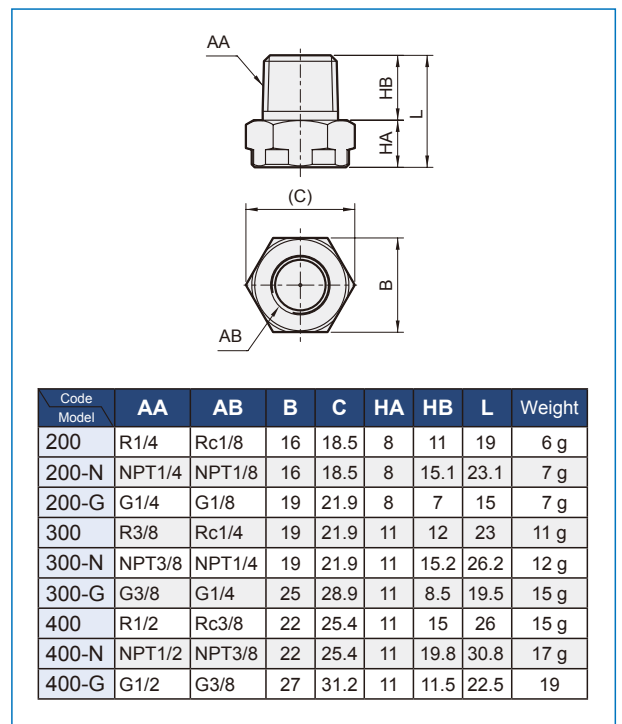
Inlet pressure 0.5 MPa



SOFT START-UP VALVE



Adaptor with smooth pressure relief



Code Model	A	AB	AC	AD	B	BA	BC	C	CA	CB	DA	DB	DC
200	126.6	31	41.2	7.5	66	5	29	39.6	31.2	40.2	11	5	11
300	134	34	50.5	8.5	78	5	28	47.6	36	31.9	14	5	14
400	149	44	62	10	90	8	42	52	47	48	17	8	15

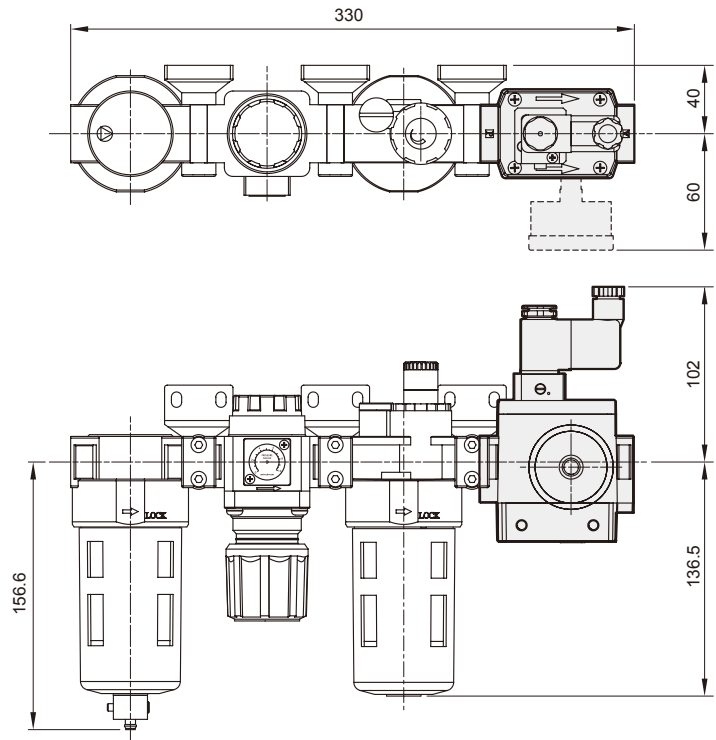
Code Model	E	FA	FB	GA	GB	H	L	LA	LB	LC	LD
200	8.9	35	47.3	53.8	27.5	M4×0.7×4.5 dp	68	50	3.5	4.3	7
300	11	29	56.3	55	32.5	M5×0.8×5 dp	76	55	5	5.2	8
400	10	34	66	60	40	M6×1.0×6 dp	86	56	6	6.2	8

Code Model	AA	AB	B	C	HA	HB	L	Weight
200	R1/4	Rc1/8	16	18.5	8	11	19	6 g
200-N	NPT1/4	NPT1/8	16	18.5	8	15.1	23.1	7 g
200-G	G1/4	G1/8	19	21.9	8	7	15	7 g
300	R3/8	Rc1/4	19	21.9	11	12	23	11 g
300-N	NPT3/8	NPT1/4	19	21.9	11	15.2	26.2	12 g
300-G	G3/8	G1/4	25	28.9	11	8.5	19.5	15 g
400	R1/2	Rc3/8	22	25.4	11	15	26	15 g
400-N	NPT1/2	NPT3/8	22	25.4	11	19.8	30.8	17 g
400-G	G1/2	G3/8	27	31.2	11	11.5	22.5	19 g

SOFT START-UP VALVE

Combination with air units (F.R.L. unit)

Air unit (F.R.L.)		Valve
MA**302		MAVS300
MA**401	MA**403	MAVS400



Bracket / Joiner set

Order example		
Pictures		

Order example	L type bracket	L type bracket	T type bracket	T type bracket
Pictures				