

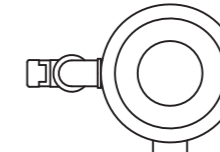
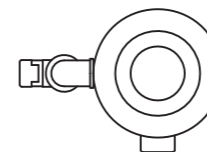
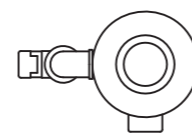
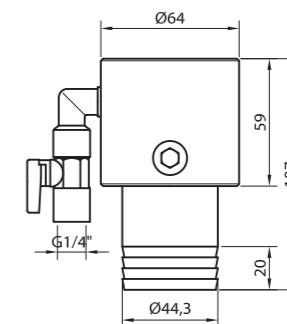
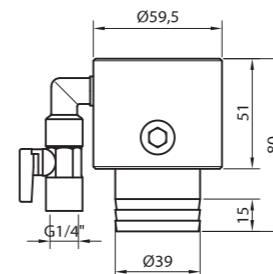
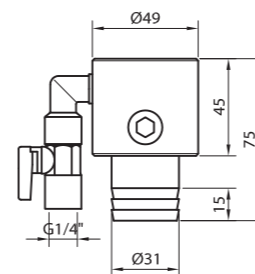
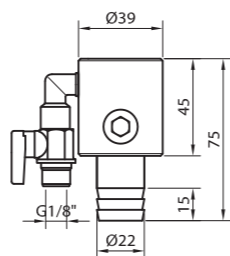
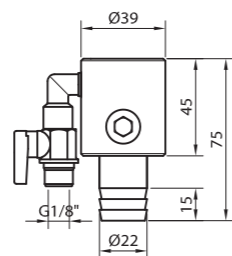
**6**

**10**

**20**

**25**

**30**



**CARACTERÍSTICAS · CHARACTERISTICS**

Consumo <i>Consumption</i>	[NL/min]
Caudal de aspiración <i>Suction air flow</i>	[NL/min]
Caudal inducido <i>Induced air flow</i>	[NL/min]
Paso interno <i>Internal hole</i>	[mm]
Depresión máx. <i>Max. vacuum degree</i>	[mbar]
Presión de alimentación <i>Supply pressure</i>	[bar]
Materiales <i>Materials</i>	
Temperatura de trabajo <i>Operating temperature</i>	[°C]
Peso <i>Weight</i>	[g]

180
350
650
Ø6
-320
4 ... 6
Al-Fe
-20 ... 70
210

300
640
1140
Ø10
-320
4 ... 6
Al-Fe
-20 ... 70
205

680
1900
2580
Ø20
-180
4 ... 6
Al-Fe
-20 ... 70
300

1200
2250
3450
Ø25
-160
4 ... 6
Al-Fe
-20 ... 70
430

1200
2500
3700
Ø30
-130
4 ... 6
Al-Fe
-20 ... 70
530

**CÓMO PEDIR · HOW TO ORDER**

Referencia de pedido <i>Ordering reference</i>
---

TVTT6
-------

TVTT10
--------

TVTT20
--------

TVTT25
--------

TVTT30
--------