

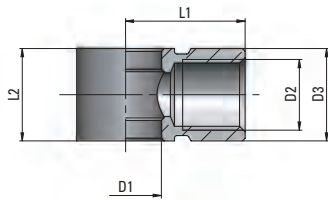
SBRSC

Banjo ring

Single banjo ring

Bague orientable simple

Einfaches Schwenkringstück



Type	D1	D2	D3	L1	L2	g _Δ
SBRSC18MSV	10	G1/8	14	16	15	15
SBRSC14MSV	13,2	G1/4	17	22	17	26
SBRSC38MSV	17	G3/8	20,5	26	20	38
SBRSC12MSV	21	G1/2	25	32	24	66



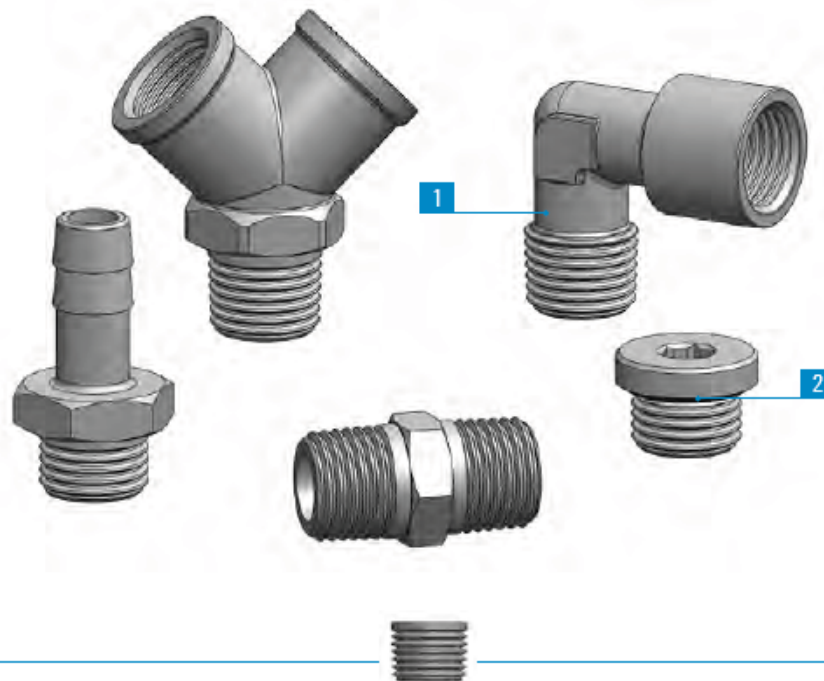
-40/+150 °C



0/60 bar



1	2
Fitting Body	Seals
Brass U NI EN 12164 CW614N - UNI EN 12165 CW617N Nickel Plated	NBR



	M5x0,8	G1/8	G1/4	G3/8	G1/2	G3/4	G1"	R1/8	R1/4	R3/8	R1/2	R3/4	R1"
	•	•	•	•	•	•	•	•	•	•	•	•	•

Toepassingsgebieden:
Pneumatische,
hydraulische en
oleodynamische
circuits.

Application fields:
Pneumatic, hydraulic and
oleodynamic circuits.

Domaines d'application:
Circuits pneumatiques,
hydrauliques et
oléodynamiques.

Anwendungsbereiche:
Hydraulische,
öldynamische und
pneumatische Anlagen.