

Cylinder switches

T-Slot

Normally open

Cylinder switches are suitable for guide cylinders, stopper cylinders and pneumatic grippers.

Temperature range: -10 °C to + 70 °C

Material: PU & PVC



Specification

Model	RSI	RSI-N	RSI-P
Wiring	2 wire	3 wire	
Switching logic	Normal open		
Switch Type	Reed switch		
Voltage range	5~240V DC/AC	10~30V DC	
Current range	100mA max.	500mA max.	
Contact rating (*1)	10W max.		
Current consumption	—	5 mA@24V DC max.	
Voltage drop	3.5V max.	0.1V@100mA max.	
Leakage current	—	—	—
Indicator	Red LED	Yellow LED	
Cable	ø3,2C,PUR	ø3,3C,PUR	
Temperature	-10~+70°C (No freezing)		
Shock (*2)	30G		
Vibration (*3)	9G		
Protection classification	IEC 60529 IP67		
Protection circuit (*4)	1		
Weight	23 g (2m cable)		
Connect diagram			

*1. Warning: Never exceed rating (watt=voltage×amperage). Permanent damage to sensor will occur.

*2. Sin wave / X.Y.Z. 3 directions / 3 times each direction / 11ms each time.

*3. Double amplitude 1.5mm / 10Hz~55Hz~10Hz(Sweep 1min) / X.Y.Z. 3 directions / 1 hour each time.

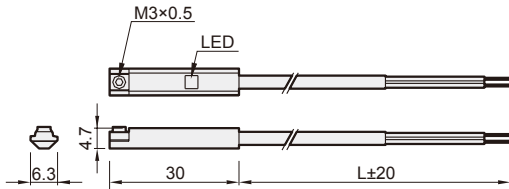
*4. 1=None / 2=Short-circuit / 3=Power source reverse polarity / 4=Surge suppression

*5. Caution for safety please refer to page 10-3~4 .

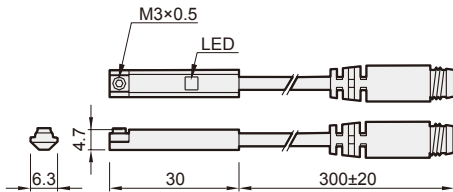
SENSOR SWITCH

Dimension

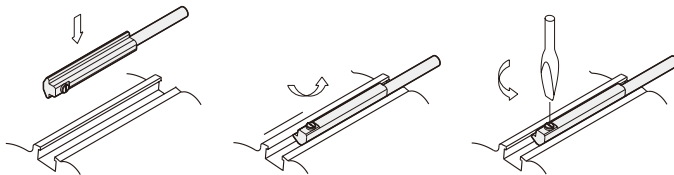
RCI



RCI*-QD



Mounting



Wiring of the RCI*-QD

- 2 wire QD wiring
- 2 wire EQD wiring
- 3 wire QD wiring

