

Round Cylinder

Double acting

Ø 32 - 63

Materials

Head and foot: Anodized aluminum, cylinder tube: 1.4301, piston rod: Hard chromed steel, seal: NBR / PUR

Temperature range:

-20 ° C to max. +80 ° C

Operating Pressure:

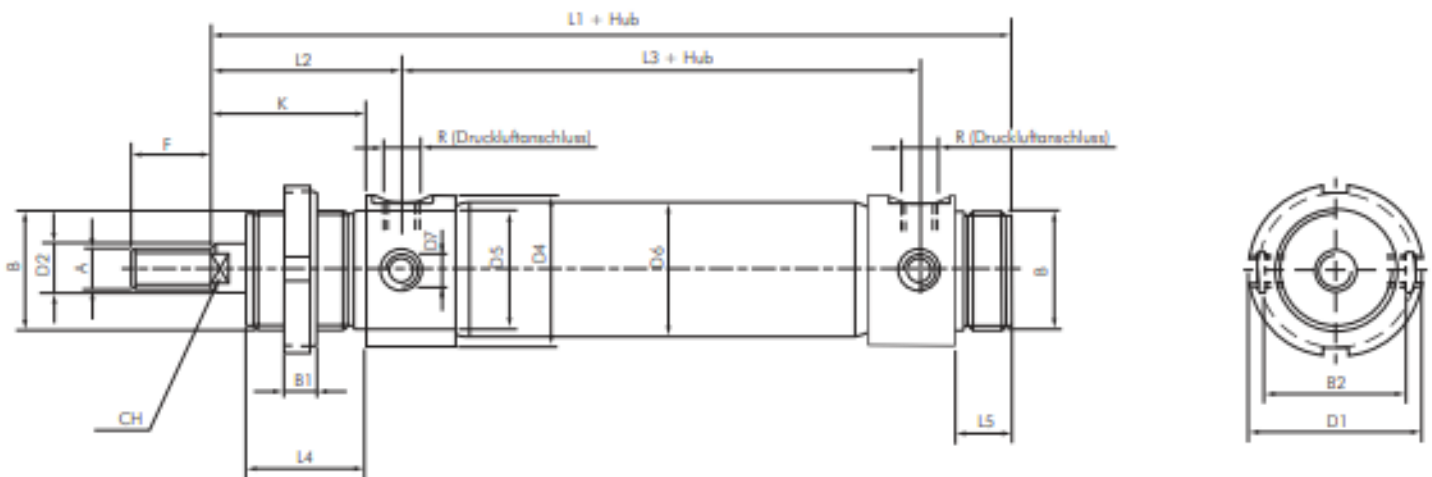
max. 10 bar

Performance:

With magnetic piston

Cylinder switch type:

C in combination with confirmation C1



Piston	A	B	B1	B2	D1	D2	D4	D5	D6	D7	F	K	L1	L2	L3	L4	L5	R	CH
32 mm	M 10	M 30x1,5	7	35	45	12	38	30	33,6	M 8x1	20	38	148	47	78	30	14	G 1/8"	10
40 mm	M 12	M 38x1,5	8	42	50	16	46	38	41,6	M 10x1	24	45	172	57	87	35	16	G 1/4"	12
50 mm	M 16	M 45x1,5	9	53	58	20	57	45	52,4	M 12x1,5	32	50	188	62	96	38	18	G 1/4"	16
63 mm	M 16	M 45x1,5	9	64	58	20	70	45	65,4	M 14x1,5	32	50	192	63	98	38	18	G 3/8"	16